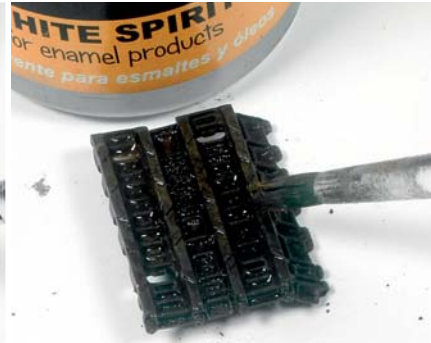


AK 085 TRACK RUST

With pigments we can get different effects depending on the method of application. We can use them to powder dry by applying them directly onto the surface or combine with oil and enamel to achieve other interesting effects. This pigment is ideal for tracks because of its color, though combined with other pigments can achieve the effect of fuel mixed with dust and dirt.



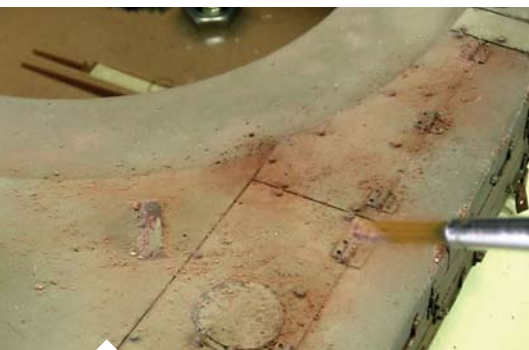
Apply the pigments dry with a brush.



Fix the pigments in place with white Spirit or Pigment fixer.



When dry you get a dark corroded rusty aspect of the tracks.



The pigment is applied directly to the surface with a round brush. Once we have finished we will fix with AK011 White spirit.



Mixed with light pigment, this time, it has also been used for dusting.



Appearance after application of the product in combination with AK025 Fuel Stains and dark oil.



As we increase the concentration of AK025 on the pigment increase the brightness obtained.